

# Contents

<b>1</b>	<b>Introduction</b>	<b>6</b>
1.1	Sound waves and ultrasound	6
1.2	Diagnostic ultrasound for vascular assessment	7
1.3	Basic haemodynamics	8
1.3.1	Laminar and turbulent flow	8
1.3.2	Resistance to flow	9
1.3.3	Flow through a stenosis	10
1.3.4	Disturbed flow	11
1.3.5	Pulsatile pressure and pulsatile flow	12
<b>2</b>	<b>Physics of ultrasound</b>	<b>15</b>
2.1	Passage of ultrasound through tissue	15
2.1.1	The speed of sound in different body tissue	15
2.1.2	Excess pressure, intensity and amplitude	16
2.1.3	Factors contributing to the attenuation of an US beam passing through the body	16
2.1.4	Specular and diffuse reflectors, Rayleigh scatterers	17
2.1.5	Acoustic impedance	18
2.1.6	Attenuation coefficient and Decibel	18
2.1.7	Reflection at interfaces	20
2.1.8	Refraction at interfaces	21
2.1.9	The ultrasound field caused by a single element transmitter	22
<b>3</b>	<b>Pulsed wave/ Pulse-echo ultrasound systems</b>	<b>23</b>
3.1	Types of transducer arrays	24
3.2	Frequency of a transducer	26
3.3	Structure and function of a transducer	26
3.3.1	Shock excitation and backing materials	26
3.3.2	Half-wave transducer resonance	27
3.3.3	Matching layer	27
3.4	The ultrasound field caused by a transducer array	28
3.4.1	Resolution of transducers arrays	29
3.4.2	Focussing with acoustic lens	30
3.4.3	Beam steering and electronic focussing	30
3.4.4	Dynamic aperture focussing	31
3.4.5	Dynamic Range	31
3.5	Components of a pulsed-wave/ pulse-echo ultrasound scanner	31
3.6	Signal processing (pre and post)	33
3.6.1	Pre-processing.	33
3.6.2	Post-processing	36

---

<b>4</b>	<b>Ultrasound modalities</b>	<b>40</b>
4.1	Doppler ultrasound	40
4.1.1	Basic Doppler physics	40
4.1.2	Continuous wave (CW) - Doppler ultrasound	40
4.1.3	Pulsed-wave Doppler/ Duplex ultrasound	43
4.1.4	Pulse repetition frequency (PRF) and Aliasing	46
4.1.5	The Wall Thump Filter	47
4.1.6	Doppler Spectral analysis	48
4.2	B mode ultrasound	49
4.3	Colour Doppler ultrasound	50
4.4	Power Doppler ultrasound	51
4.6	Ultrasound phenomena and artefacts	52
4.7	Measurement of blood flow	57
4.8	Heating effect and the Thermal Index	59
4.9	Cavitation and the Mechanical index	60
<b>5</b>	<b>Peripheral arterial disease</b>	<b>63</b>
5.1	Objectives of scan	63
5.2	B mode and colour Doppler Imaging	63
5.3	Spectral Doppler criteria	65
5.3.1	Increased stenotic zone velocity: Peak Systolic Velocity (PSV)	65
5.3.2	Peak velocity relationships in femoral arteries	66
5.3.3	Peak Systolic Velocity Ratio (PSVR)	67
5.3.4	Spectral broadening	69
5.3.5	Pulsatility of Doppler waveform in disturbed flow	71
5.3.6	Combination of PSV ratio and spectral broadening	71
5.3.6	Spectral characteristics of laminar and turbulent flow - Indices	73
5.4	Transatlantic classification	77
5.5	Instrument settings	79
5.6	Algorithm for arterial stenosis detection	80
5.7	Protocol for arterial Duplex assessment of lower limb	81
5.8	Notes and pitfalls	83
5.9	Lower limb arterial reporting proforma	84

<b>6</b>	<b>Cerebro-vascular disease</b>	<b>87</b>
6.1	Background	87
6.2	Objectives of the scan	88
6.3	B mode and colour Doppler	89
6.3.1	Plaque echo-texture	90
6.4	Spectral Doppler parameters	90
6.4.1	Normal cerebral vessel spectral waveforms	90
6.4.2	Waveform interpretation	94
6.4.2	Peak Systolic Velocity (PSV) and Peak Systolic Velocity ratio (PSVR)	95
6.4.3	St Mary's ratio	96
6.4.4	End diastolic velocity (EDV)	96
6.4.5	Grading stenoses in deciles	97
6.5	Vertebral and subclavian artery examination	97
6.6	Instrument settings	98
6.7	Algorithm for NASCET grading of ICA stenosis	99
6.8	Duplex protocol for NASCET assessment of the ICA stenosis	100
6.9	Notes and pitfalls	102
6.10	Carotid stenosis reporting proforma	103
<b>7</b>	<b>Peripheral fistulae for vascular access</b>	<b>106</b>
7.1	Arterial features	106
7.2	Venous features	107
7.3	Post operative Duplex scanning	108
7.4	Protocol for pre-op assessment of the upper limb for fistula formation—Arterial	109
7.5	Protocol for pre-op assessment of the upper limb for fistula formation—Venous	111
7.6	Protocol for post-op assessment of the upper limb for fistula formation	113
7.7	Pre-operative fistula assessment proforma	114
<b>8</b>	<b>Deep vein thrombosis (DVT)</b>	<b>117</b>
8.1	Background	117
8.2	B mode assessment	117
8.3	Colour Doppler imaging	120
8.4	Spectral Doppler features	120
8.5	Instrument settings	121
8.6	Protocol for lower limb venous assessment for thrombosis	123
8.7	Deep vein thrombosis assessment proforma	125

---

<b>9</b>	<b>Chronic lower limb venous insufficiency (CVI)</b>	<b>128</b>
9.1	Background	129
9.2	Objectives of scan	129
9.3	CEAP classification	129
9.4	REVAS classification for recurrent varicose veins	131
9.5	B mode scanning	133
9.6	Colour Doppler evaluation of reflux – calf compression	138
9.7	Spectral Doppler criteria for reflux and CVI	138
9.8	Instrument settings	140
9.9	Duplex protocol for assessment of chronic venous insufficiency	142
9.10	Chronic venous insufficiency assessment proforma	144
<b>10</b>	<b>Peripheral bypass graft surveillance</b>	<b>147</b>
10.1	Background	147
10.2	Purpose of scan	148
10.3	B mode and Colour Doppler	148
10.4	Spectral Doppler waveform features	149
10.5	Instrument settings	150
10.6	Protocol for Duplex assessment of lower limb bypass graft	152
10.7	Notes and pitfalls	154
<b>11</b>	<b>Abdominal aortic aneurysm (AAA)</b>	<b>159</b>
11.1	Background	159
11.2	Objectives of scan	161
11.3	Assessment for abdominal aortic aneurysm	161
11.4	Instrument settings	162
11.5	Protocol for abdominal aortic aneurysm assessment	164
11.6	Post endovascular aneurysm repair assessment	166
11.7	Purpose of scan:	166
11.8	Instrument settings	168
11.9	Scanning protocol for post EVAR surveillance	169

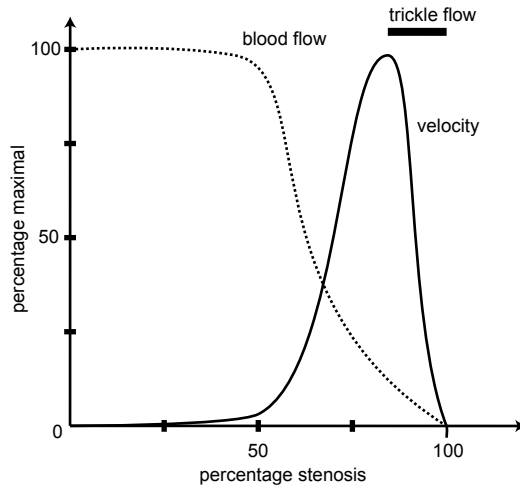


Figure 3. Flow and velocity changes expressed as percent maximal in response to percentage stenosis.

### 1.3.4 Disturbed flow

Laminar patterns of flow may be disturbed in the absence of disease in certain circumstances. As mentioned above, there is normally a ‘boundary layer’ of blood at the vessel wall which is in a ‘no slip state’. At bifurcations branches or curves in the vascular tree, bizarre eccentric jets are formed which cause disturbed flow.

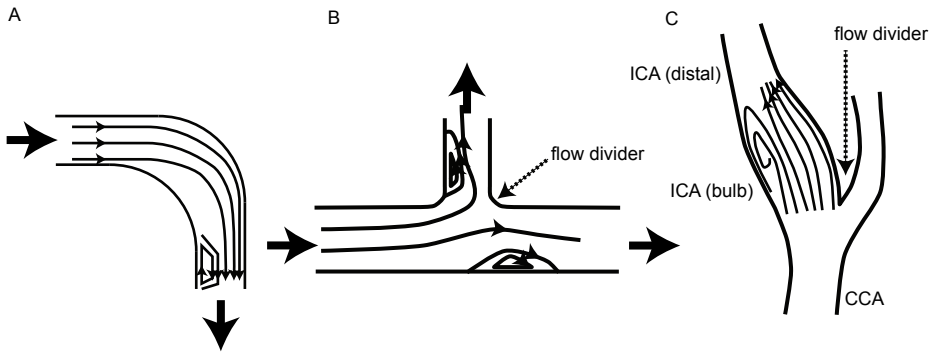


Figure 4. Schematics demonstrating patterns of flow A) around a bend B) at a branch vessel exiting at 90 degrees, and C) in the carotid bulb. Note that the flow is fastest closest to where there is a flow divider. Boundary layer separation situations are seen where flow is stagnant.

Such effects are well recognised in the internal carotid bulb where an area of boundary layer separation occurs. Similarly at the inner corner of a branch artery which divides at 90 degrees from the main artery, the inside corner of a distal bypass graft anastomosis and the inside curvature of a curved vessel (see Figure 4)

No clear differentiation between such flow states and flow disturbance produced by local lumen irregularities is possible, other than by direct visualisation of the plaque.

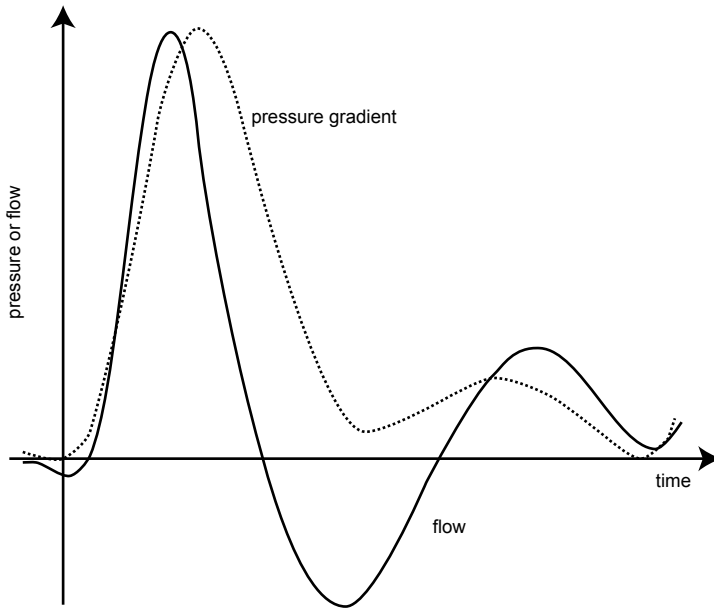
### **1.3.5 Pulsatile pressure and pulsatile flow**

The above discussion accurately describes constant flow in non-distensible vessels. The actual situation *in vivo* approximates to this when considering averaged pressures and velocities.

Clearly blood pressure generated by the heart is pulsatile. The steep systolic rise in pressure in arteries is due to blood being ejected from the heart faster than it can flow away. Much of this pressure is stored temporarily in the elasticity of the arteries. As systole wanes, outflow outstrips inflow and pressure decreases.

As the vasculature is not rigid, pressure increases take some time to translate through the vasculature. The velocity of this pressure or pulse wave ranges from about 5 to 15 m/second where as blood flow in the aorta is only about 0.2 m/second. This discrepancy between the pulse wave velocity and the blood flow velocity can be explained by understanding that blood is incompressible. Hence forwards motion is achieved by shunting the blood ahead and also by distending the vessel ahead.

The relationship between pressure gradients and flow in arteries was investigated by observing injected bubbles into the femoral arteries of dogs whilst measuring pressure from transducers inserted at two points in the vessel (McDonald, 1955).



*Figure 5. Relationship between flow and pressure in the femoral artery. Redrawn from McDonald, 1955).*

McDonald observed that flow is consistently comprised of: fast forward flow during systole followed immediately by a back-flow phase, which in turn is followed by a forward flow in mid diastole, which is terminated by a brief back-flow phase. McDonald also observed that flow in the femoral artery oscillates in the same way as the pressure gradient but with a phase lag which varies throughout the cycle (Figure 5).

- 2) Absorption: acoustic energy is converted to heat energy. Under normal circumstances with diagnostic ultrasound, the amount of heat generated should be too small to generate a temperature rise.

Other causes of attenuation are divergence of the ultrasound beam and possibly refraction.

#### 2.1.4 Specular and diffuse reflectors, Rayleigh scatterers

A specular reflector is a large smooth interface with dimensions much larger than the wavelength of the ultrasound. These sorts of reflectors produce strong ultrasound echoes in a single direction. As long as the reflected wave returns to the transducer, large amplitude echoes are produced.

Often surfaces in the body are rough. Such interfaces are known as diffuse reflectors. Echoes from diffuse reflectors are sent off in many directions due to the roughness of the interface. These echoes are hence easier to detect but may be of lower intensity.

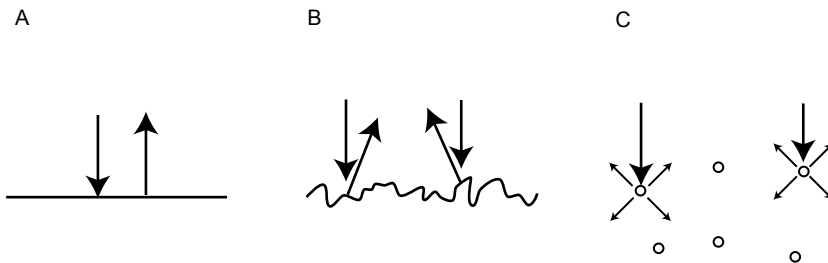


Figure 1. Illustration of A) Specular reflection from a smooth surface; B) Diffuse reflection from a rough surface and C) Scattering from Rayleigh scatterers.

For objects which are similar in size to the wavelength of the ultrasound, scattering of the incident ultrasound wave occurs. Hence such objects are termed scatterers.

For very small scatterers, the degree of scattering increases with increasing frequency of the incident ultrasound and with increasing size of the scatterer – i.e., reflection from scatterers is frequency dependant as opposed to reflection from specular reflectors.

Scatterers which are much smaller than the wavelength of the ultrasound (e.g., red blood cells) are termed Rayleigh scatterers. For these objects, scattering increases in proportion to the fourth power of the wavelength. Hence, if the frequency of the ultrasound is doubled the scattered power will increase sixteen times.

Note that the penetration (the maximum distance from which it is possible to detect scattered echoes) is greater at lower frequencies. This is so because attenuation, the reduction in amplitude with increasing distance travelled, is dependant on reflection and scatter at interfaces and also absorption. In most cases, attenuation is almost proportionate to frequency. Hence the lower frequency probe will result in less wave attenuation and hence greater penetration to reach small scatterers at greater depth.

### 2.1.5 Acoustic Impedance

The degree of reflection at any interface between two media is related to the characteristic properties of the two media. This characteristic property is called the acoustic impedances.

The specific tissue acoustic impedance ( $Z$ ) is the relationship between the excess pressure ( $P$ ) and the velocity ( $v$ ) of particles in the medium:

$$Z = \frac{P}{v}$$

The impedance can be calculated from the product of the density of the material and the speed of sound in it ( $c$ ):

$$Z = \rho c$$

Using  $c = \frac{1}{\sqrt{\kappa\rho}}$  m

$$Z = \frac{\rho}{\sqrt{\kappa}}$$

It can be seen that the relationship between excess pressure and particle velocity is determined by the density and compressibility of the material.

### 2.1.6 Attenuation coefficient and Decibel

The attenuation coefficient is the degree of sound beam attenuation in a tissue, usually given in decibels per cm (dB/ cm).

In other words it quantifies the difference in signal amplitude received by a transducer between two similar reflectors one cm apart. The attenuation coefficient is roughly proportional to the frequency of the ultrasound wave.

The decibel scale is a way of expressing ratios of intensities or powers of signals.

- Intensity ratio (dB) =  $10 \log_{10} \left( \frac{I}{I_0} \right)$  dB
- Power ratio (dB) =  $10 \log_{10} \left( \frac{P}{P_0} \right)$  dB

Since the power is proportional to (voltage)<sup>2</sup>:

- Signal ratio (dB) =  $10 \log_{10} \left( \frac{V}{V_0} \right)^2$  dB  
 $= 20 \log_{10} \left( \frac{V}{V_0} \right)$  dB

Where  $P_0$  and  $V_0$  are initial power and voltage and  $P$  and  $V$  are power and voltage at a second point.

Since it is a logarithmic scale, a wide range of signals are compressed into a relatively small scale. Also, due to the logarithmic nature, products of ratios in dB encountered when dealing with attenuation in different layers of tissue or successive stages of signal processing, may be added to yield total change in signal.

**Example 1. Calculate the total attenuation in dB of an ultrasound beam of 3.5 MHz which is received from a target at a depth of 12cm in tissue with an attenuation coefficient of 0.8 dB/cm/MHz.**

Total path length = 24 cm

Attenuation =  $3.5 \times 24 \times 0.8 = 67.2$  dB

**Example 2. What is the difference in decibels between an intensity of  $1 \text{ mWcm}^{-2}$  and one of  $2 \text{ mWcm}^{-2}$ ?**

Relative intensity level (dB) =  $10 \log (I_2 / I_1)$  where  $I$  refers to intensity

Relative intensity =  $10 \log 2$

= 3 dB

### 6.7 Algorithm for NASCET grading of ICA stenosis

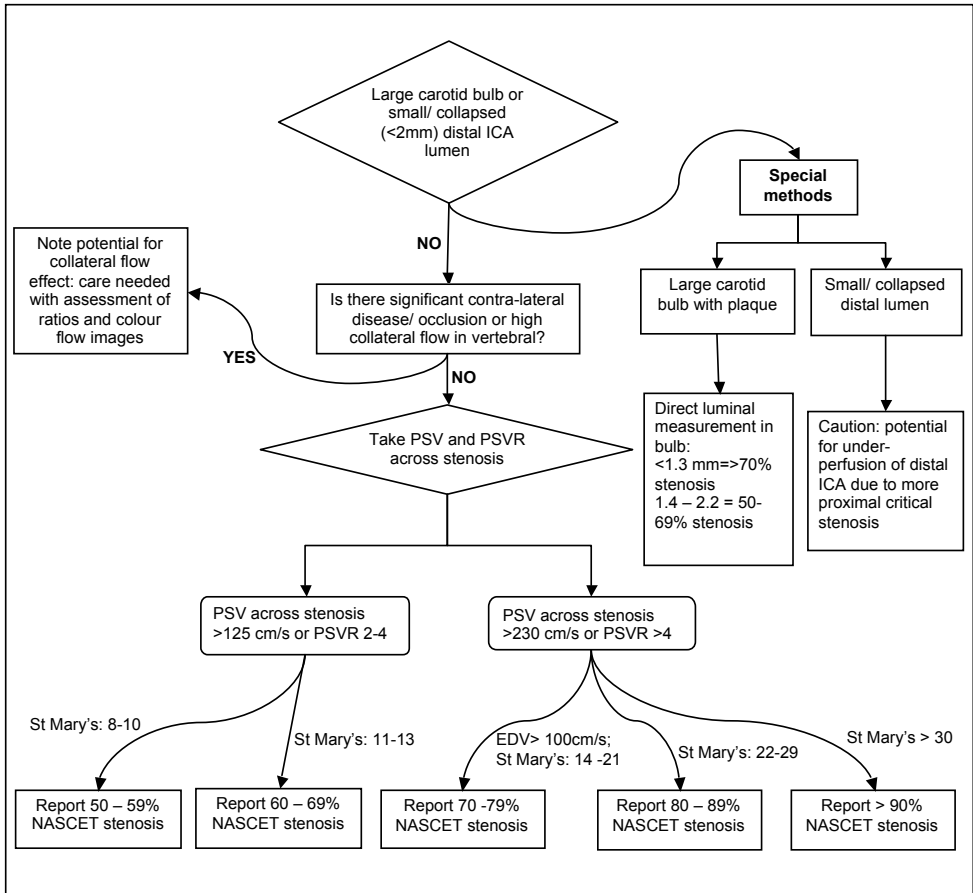


Figure 10. Decision making algorithm for diagnosis of carotid stenosis